

ECHIZEN CITY

Flood Hazard Map

Sakaguchi/Shirayama/Higashi/Nishi/Minami/Kamiyama/Yoshino/Omushi/Oshio district

(Planned scale)

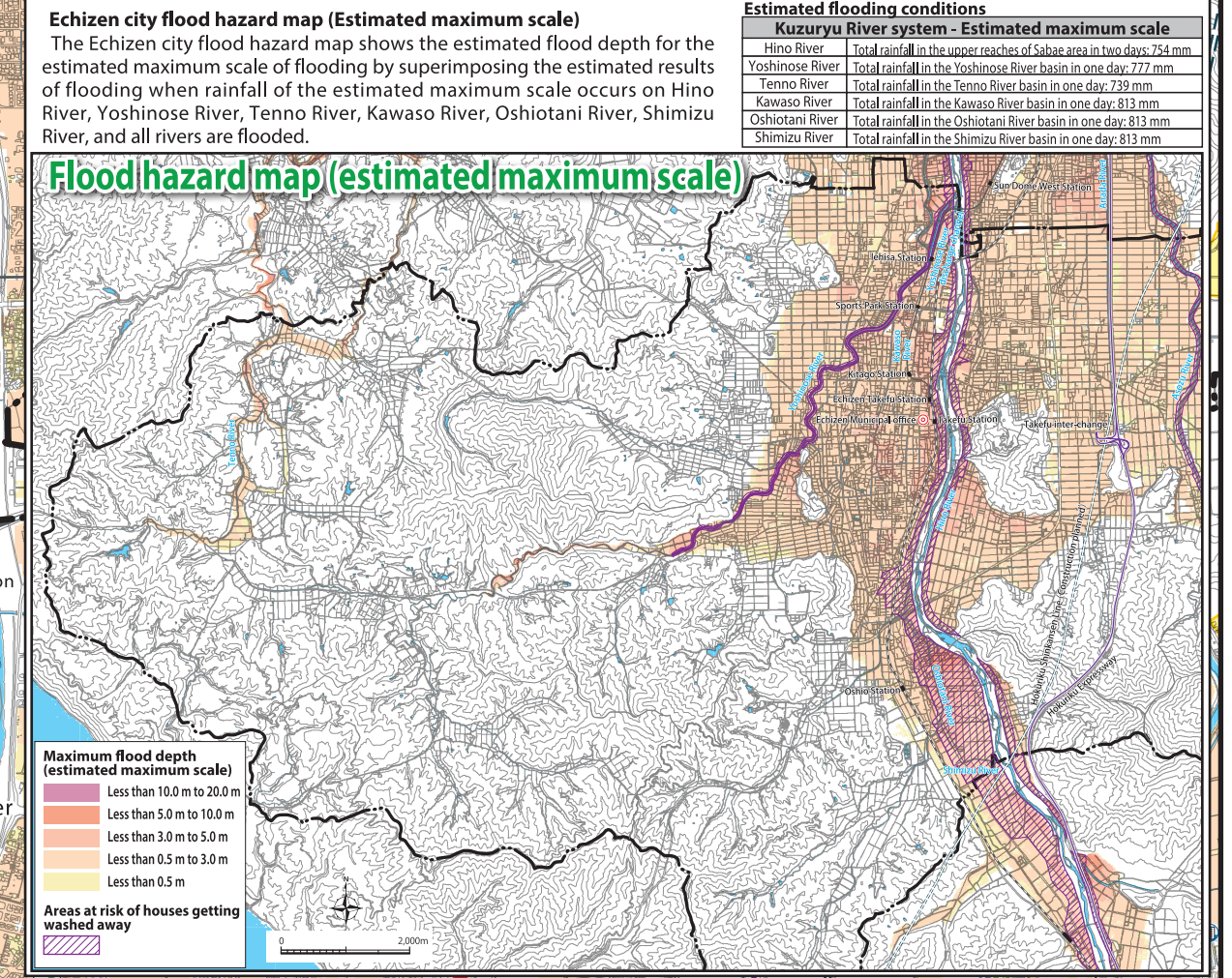
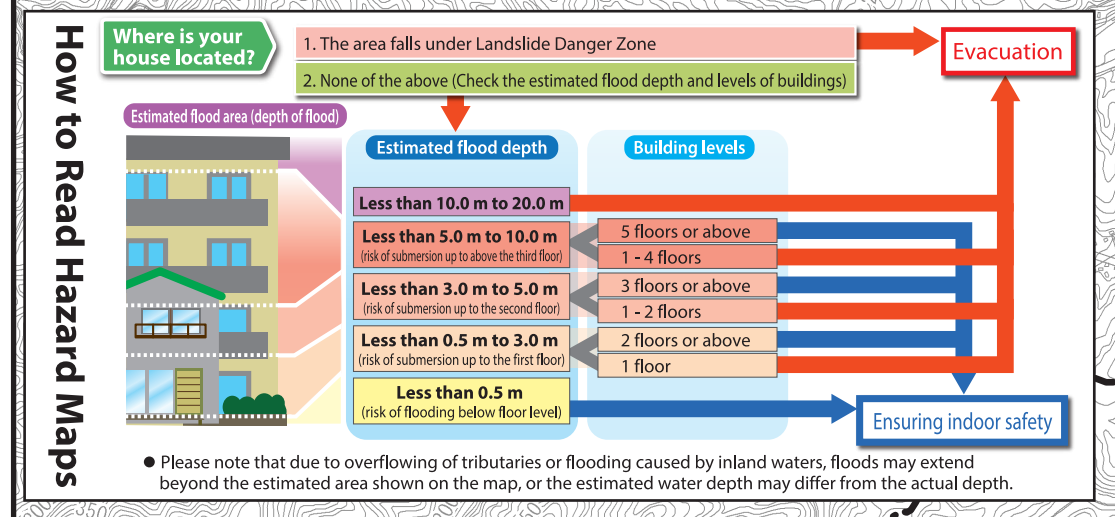
Special edition

Echizen city flood hazard map (planned scale)

The Echizen city flood hazard map shows the estimated flood depth for the planned scale by superimposing the estimated results of flooding when estimated rainfall of the planned scale occurs on Hino River, Yoshino River, Tenno River, Kawaso River, Oshiotani River, Shimizu River, and all rivers are flooded.

Estimated flooding conditions

Kuzuryu River system - Planned scale	
Hino River	Total rainfall in the upper reaches of Sabae area in two days: 320 mm
Yoshino River	Total rainfall in the Yoshino River basin in one day: 189 mm
Tenno River	Total rainfall in the Tenno River basin in one day: 188 mm
Kawaso River	Total rainfall in the Kawaso River basin in one day: 192 mm
Oshiotani River	Total rainfall in the Oshiotani River basin in one day: 177 mm
Shimizu River	Total rainfall in the Shimizu River basin in one day: 177 mm



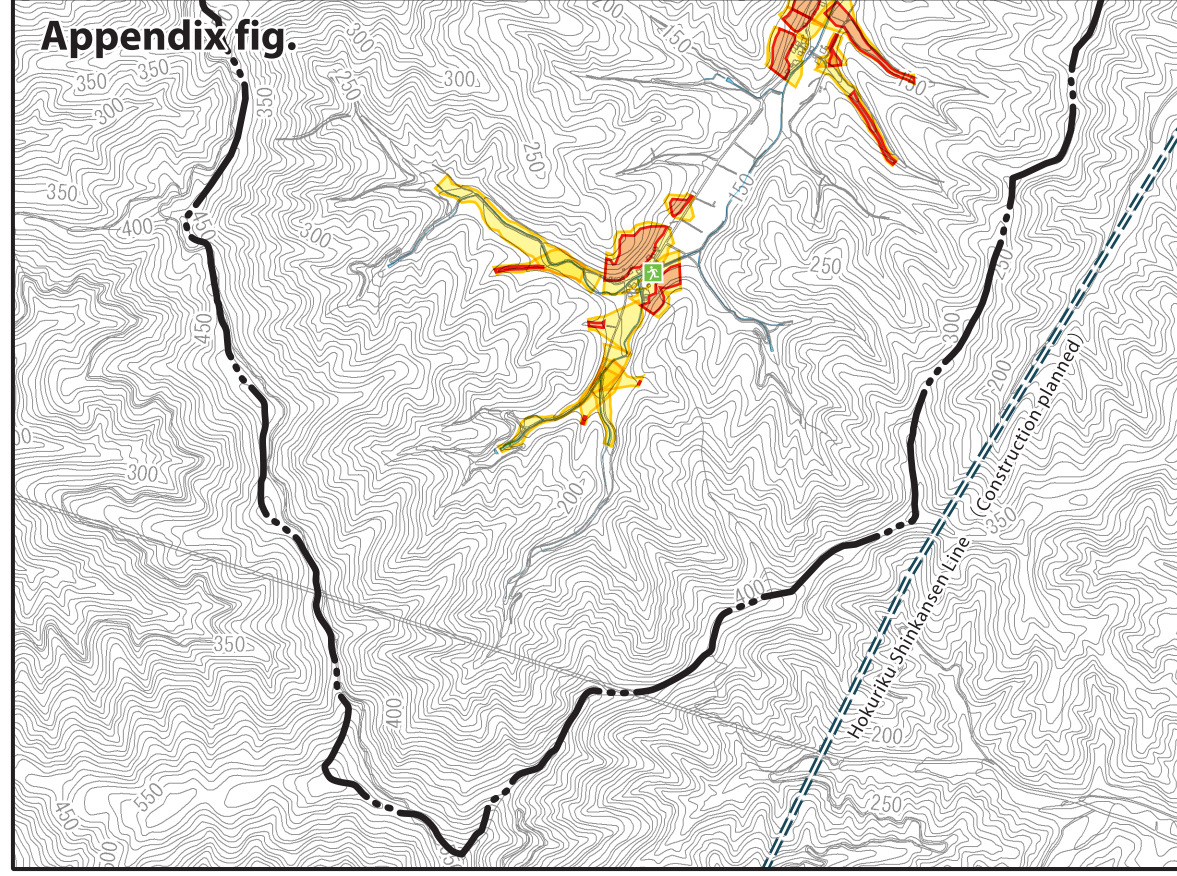
Regional evacuation sites (designated evacuation shelters) and designated emergency evacuation shelters

District name	No.	Facility	Available classification		
			Flood	Steep slope debris flow landslide	Earthquake
Higashi district	1	Takefu Higashi Elementary School	○	○	○
Nishi district	2	Takefu Nishi Elementary School	○	○	○
	3	Takefu Daichi Junior High School	○	○	○
Minami district	4	Takefu Minami Elementary School	○	○	○
Kamiyama district	5	Takefu Daini Junior High School	○	○	○
Yoshino district	6	Kamiyama Elementary School	○	○	○
	7	Yoshino Elementary School	○	○	○
Omushi district	8	Yanagiso Community Center	○	○	○
	12	Omushi Elementary School	○	○	○
Sakaguchi district	13	Sakaguchi Elementary School	○	○	○
Oshio district	14	Oshio Elementary School	○	○	○
Shirayama district	15	Takefu Dairoku Junior High School	○	○	○
	20	Shirayama Elementary School	○	○	○
Shirayama district	21	Takefu Daigo Junior High School	○	○	○

※ Takefu Daigo Junior High School is open only for major disasters.

Designated emergency evacuation area

District name	No.	Facility	Available classification		
			Flood	Steep slope debris flow landslide	Earthquake
Higashi district	28	Hinogawa Kasen Ryokuchi (Left bank of the river)		○	○
	29	Horikawa Park(Nishiki Park)		○	○
	30	Kitagofureai Park		○	○
	31	Takefukitago Park		○	○
Nishi district	32	Takase Park		○	○
	33	Takefu Chuo Park		○	○
	34	Kamo Park		○	○
	35	Ishihara Park		○	○
	36	Nishiura Park		○	○
	37	Goro Park		○	○
	38	Hiraike Park		○	○
	39	Himawari Park		○	○
	40	Karamatsu Park		○	○
	41	Asagiri Park		○	○
Minami district	42	Minamimoto Park		○	○
	43	Himekawa Park		○	○
	44	Bunkyo Park		○	○
	45	Murasakishikibu Park		○	○
	46	Wakasugi Park	○	○	○
	47	Kamiyama Nanbu Shikibu Park	○	○	○
	48	Myohoji Park	○	○	○
	49	Tsukimi Park	○	○	○
	50	Nawate Park	○	○	○
	51	Tsunehisa Tokujin Iseki Park	○	○	○
Kamiyama district	52	Mitsukuchi Park	○	○	○
	53	Sempuku Daini Park	○	○	○
	54	Sempuku Park	○	○	○
	55	Hibarigaoka Daichi Park	○	○	○
	56	Shin Onofureai Park	○	○	○
	57	Hibarigaoka Daini Park	○	○	○
	58	Lions No Oka Daini Park	○	○	○
	59	Mukaigaoka Park	○	○	○
	60	Kamihonbodanchi Park	○	○	○
	61	Tannansogo Park (Ground)	○	○	○
Yoshino district	62	Iehisa Park	○	○	○
	63	Iehisa Sports Park	○	○	○
	64	Yanagihara Park	○	○	○
	65	Iehisa Nanbu Park	○	○	○
	66	Shibahara Daichi Park	○	○	○
	67	Shibahara Daini Park	○	○	○
	68	Shibahara Park	○	○	○
	69	Takefu Shibahara Park	○	○	○
	88	Sakuraoka Park	○	○	○
	89	Jinya Daini Park	○	○	○
Omushi district	90	Jinya Daichi Park	○	○	○
	91	Nishinogo Daichi Park	○	○	○
	92	Kitayama Park	○	○	○
	93	Hagoromo Park	○	○	○
Oshio district	94	Komadori Daichi Park	○	○	○
	95	Komadori Daini Park	○	○	○
	96	Asaka Park	○	○	○
	97	Chanoki Park	○	○	○
Yui Park	98	Yui Park	○	○	○



Legend

- Regional evacuation sites (Designated evacuation shelters)
- Designated emergency evacuation area
- Primary evacuation area
- Community center
- Welfare facility
- Medical institution
- Fire department
- Police station
- Municipal office/branch
- Rainfall observation center
- River fixed-point camera
- Flood prevention warehouse
- Water level gauging station
- Underground passage
- District boundaries
- Maximum flood depth (planned scale)
- Landslide danger zones and so on
- Flood and landslide occurrence zones
- Flood scope history
- Areas that may pose danger during evacuation

Appendix fig.

